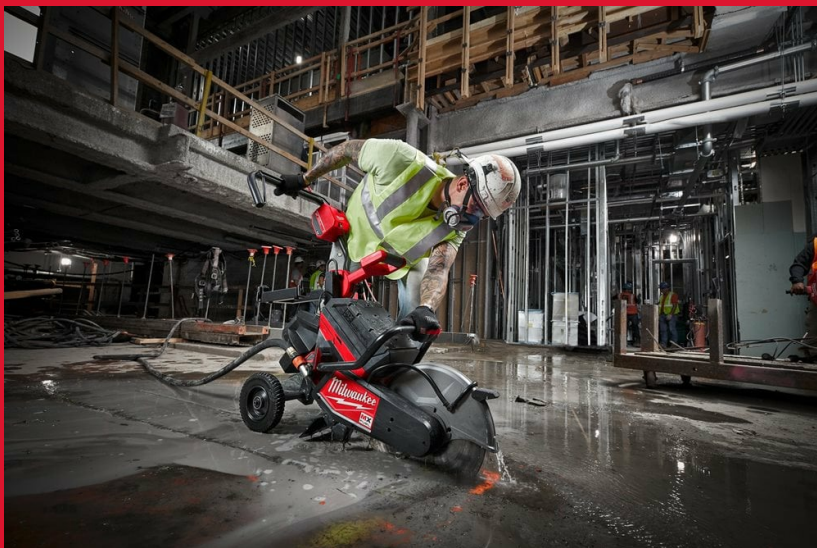


# MXF COS350-602

## MX FUEL™ 350 MM CUT-OFF SAW

- The world's first 350 mm battery powered cut-off saw to deliver the power to cut reinforced concrete with a full 350 mm cut capacity
- Faster cuts, start to finish: 3 second push button start up eliminates the need to mix petrol and oil, and avoids petrol engine maintenance
- No petrol headaches: Can be used indoors due to zero fume emissions
- Petrol-equivalent performance with a maximum no-load speed of 5370 rpm and a full 125 mm depth of cut
- Quieter than other petrol equivalent saws, with a low engine vibration and well-balanced weight
- Keyless adjustable blade guard & on-board water line for wet cutting which is compatible with the M18™ SWITCH TANK™ interchangeable sprayer and water supply system
- Separately available cut-off saw cart MXF COSC to maintain straight cuts
- Building on the strengths of the FUEL™ technology, MX FUEL™ system reaches new levels of cordless performance. Focused on petrol performance, these tools deliver without the hazards associated with emissions, noise, vibration, and the frustrations of petrol maintenance
- ONE-KEY™ tool tracking & security offers a free of charge cloud-based tracking network and inventory management platform for your tools. ONE-KEY™ also features a remote locking functionality
- Supplied with DUH 350 mm diamond blade (4932471986), contractor bag for batteries and charger



### REDLITHIUM™

Article Number	4933464881, 4933464882, 4933479969
Battery pack capacity (Ah)	6.0
Battery type	Li-ion
Blade diameter (mm)	350
Bore size (mm)	20/ 25.4
Cutting depth (mm)	125
Kit included	2 x MXF XC406 Battery packs, MXF C Charger, No kitbox or bag supplied
No load speed (rpm)	5370
No. of batteries supplied	2
Standard equipment	HUDD 350mm diamond blade (4932471985), Contractor bag for batteries and charger

Weight with battery pack (EPTA) (kg)	16.7 (MXF XC406)
--------------------------------------	------------------